

Louisiana State University Health Sciences Center – Shreveport

5.a.

Number of students by classification

Institution Name	Fall 2010 Headcount			Total	2010-11 AY			Total FTE
	Undergraduate	Graduate	Postgraduate ¹		Undergrad FTE ²	Grad FTE ²	Postgrad FTE ¹	
LSUHSC-Shreveport	69	770	567	1,406	67	745	567	1,379

¹Postgraduate learners at LSUHSC-S include graduate medical residents (427) and fellows (85) and other research/healthcare postgraduate trainees (55)

²SACS methodology used for undergraduate and graduate FTE calculations and includes exam-only graduate students (40)

5.b.

Number of Instructional Staff Fall 2010

Institution Name	Instructional Faculty Headcount	Instructional Faculty FTE
LSUHSC – Shreveport	390	350.8

5.c.

Average class student-to-instructor ratio (average undergraduate class size)

Institution name	2010-11 AY
LSUHSC – Shreveport	5 to 1*

*Undergraduate ratio only

Source: IPEDS Fall Enrollment 2010-11

5.d.

Average number of students per instructor

2010-11 FTE enrollment per FTE instructor
3.9 (1379/350.8)

5.e. Number of non-instructional staff members in academic colleges and departments

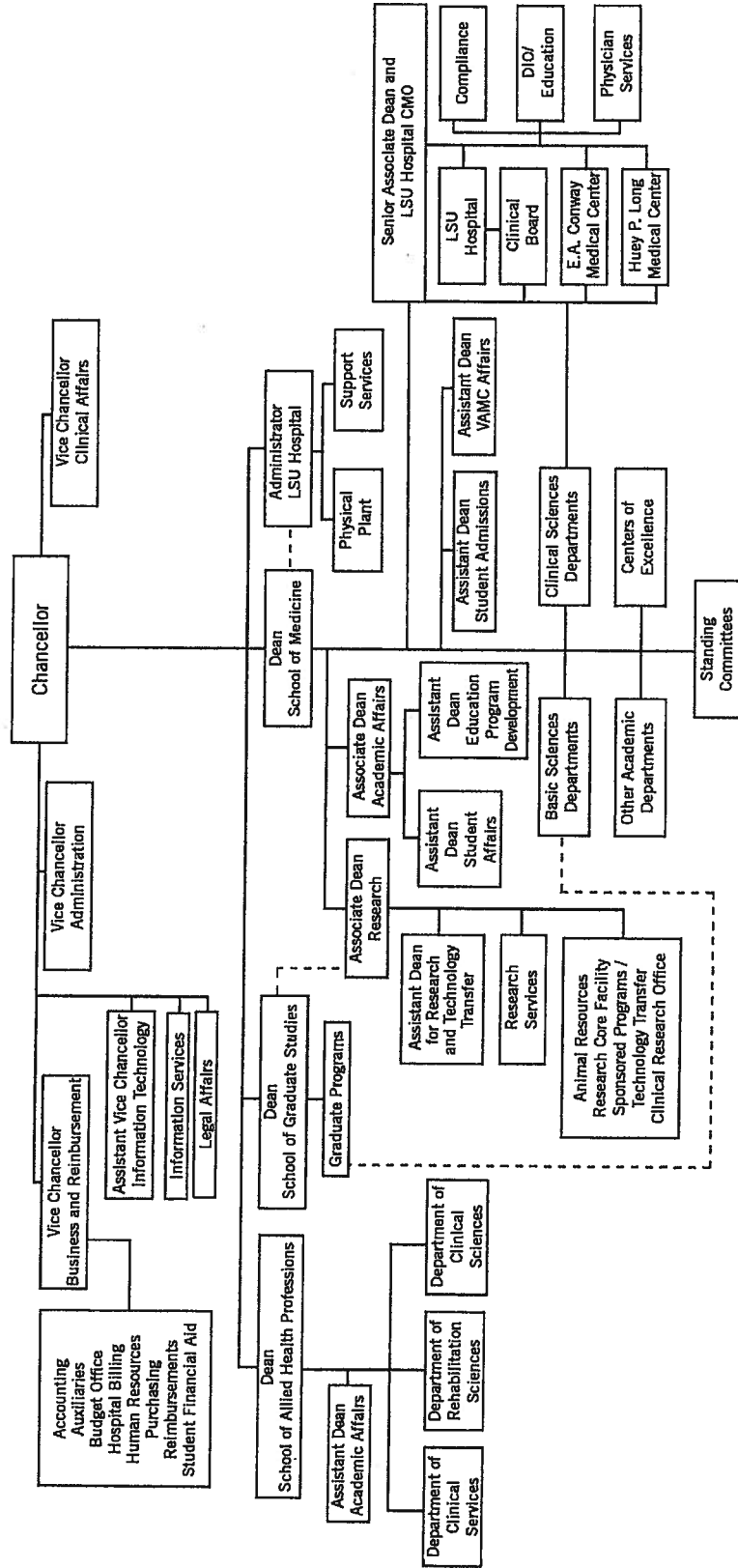
Headcount	317
FTE	307

5.f. Number of staff in Administrative Areas*

Headcount	319
FTE	133.9

**For LSUHSC-S, headcount is significantly higher than the FTE since percent effort for educational support was used to calculate FTE; the remaining portion supports hospital function*

LSU HEALTH SCIENCES CENTER AT SHREVEPORT ORGANIZATIONAL CHART



Revised: 9/13/2010

LSU Health Science Center at Shreveport
Organizational Chart

POSITION	TOTAL BASE SALARY FALL 2009	SALARY CHANGE SINCE 6/30/2008
Chancellor	\$325,000	4/1/2009 \$325,000 Previous Chancellor retired and new Chancellor hired at a greater salary
Vice Chancellor Business and Reimbursements	\$251,410.50	July 1, 2008 \$251,410.50 Current incumbent received a raise
Vice Chancellor for Administration (created 4/15/2009)	\$220,000.00	April 15, 2009 Current incumbent hired at a salary of \$220,000
Vice Chancellor Clinical Affairs		July 1, 2008 \$186,999.96 previous incumbent received increase. July 1, 2010 \$222,000 Previous incumbent retired and new Vice Chancellor hired at a greater salary
Dean School of Allied Health Professions	\$144,417.96	July 1, 2008 \$144,417.96 Current incumbent received a raise
Dean School of Graduate Studies	\$128,211.96	July 1, 2008 \$128,211.96 Current incumbent received a raise
Dean School of Medicine (created 11/01/2009)	\$270,000.00	November 1, 2009 Current incumbent hired at a salary of \$270,000
Administrator LSU Hospital	\$236,982.00	July 1, 2008 \$236,982.00 Current incumbent received a raise
Senior Associate Dean and LSU Hospital CMO (created 11/1/2010)		January 1, 2010 Current incumbent hired at a salary of \$200,000