

LSU Law

		09-10 website #	09-10 Reported on 10-11 form	09-10 BoR data	10-11 BoR data	10-11 Campus data
A (1)	# of students by classification--- Graduate	656	656	656	682	682
(2)	FTE	744.4	802.08	802.1	802.1	833.08
B (1)	# of instructional staff--- Headcount	87	89	87	94	

Performance Objective (5)

Reporting Requirements

Submit a report to the Board of Regents, the legislative auditor, and the legislature containing certain organizational data, including but not limited to the following:

a. *Number of students by classification*

# of students by classification	Baseline Fall 2009 Headcount	Fall 2010 Headcount
Headcount (Professional)	656	682
FTE	802.08	833.08

b. *Number of instructional staff members*

Instructional Staff	Baseline Fall 2009 ¹	Fall 2010 ²
Headcount	89	96
FTE	44.97	49.62

c. *Average Undergraduate Class Student-to-Instructor Ratio*

Not applicable to the LSU Law Center

¹For the Fall of 2009, the Board of Regents database indicates a headcount of 88 and FTE of 43.3. The variance is the inclusion of the two Vice Chancellors in the instructional faculty and the deletion of an adjunct faculty member who was no longer serving as an adjunct professor.

²For the Fall of 2010, the Board of Regents database indicates a headcount of 94 and FTE of 47.62. The variance is the inclusion of the two Vice Chancellors in the instructional faculty.

d. *Average number of students per instructor*

Avg. # of students per instructor	Baseline Fall 2009	Fall 2010
Student-to-Instructor Ratio	17.84	16.79

e. *Number of non-instructional staff members in academic colleges and departments*

Non-Instructional Academic Staff	Baseline Fall 2009	Fall 2010
Headcount	33.0	29.0
FTE	31.4	27.4

f. *Number of staff in administrative areas*

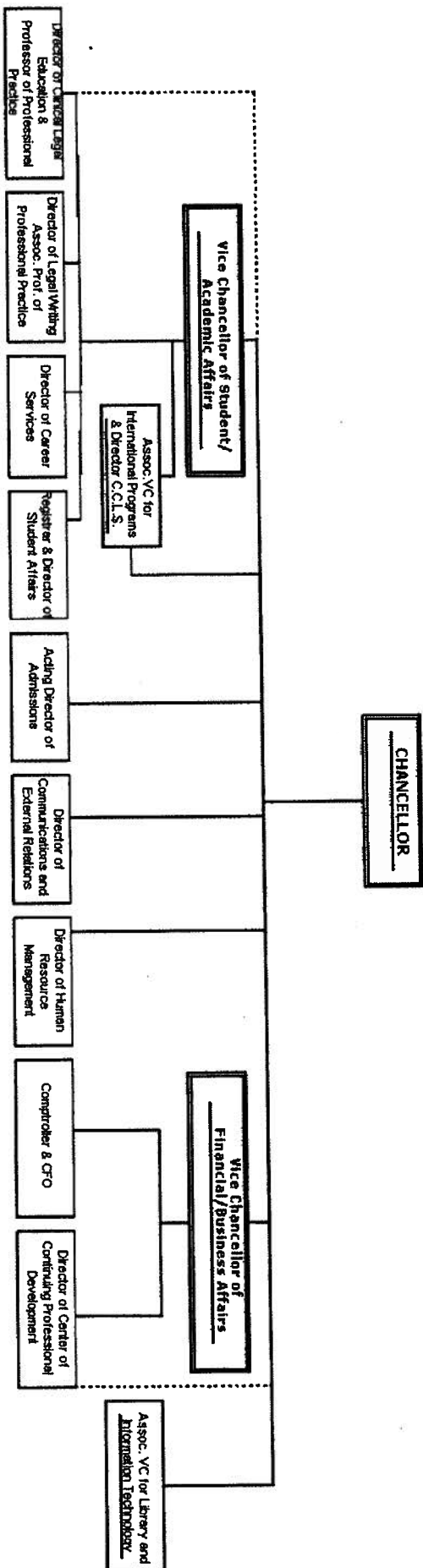
Administrative Staff	Baseline Fall 2009	Fall 2010
Headcount	31.0	29.0
FTE	30.15	28.4

g. Organization chart containing all departments and personnel in the institution down to the second level of the organization below the president, chancellor, or equivalent position.

See Attached

LSU PAUL M. HEBERT LAW CENTER

2010-2011



h. Salaries of all personnel identified in Subparagraph (g) of this paragraph and the date, amount, and type of all increases in salary received since June 30, 2008.

LSU PAUL M. HEBERT LAW CENTER

POSITION	TOTAL BASE SALARY FALL	
	2011	SALARY CHANGES SINCE 06/30/2008
Chancellor	\$282,150	Change from \$270,000 based on General Merit Raise on 7/1/2008
Vice-Chancellor - Academic Affairs	\$223,497	Change from \$214,901 based on General Merit Raise on 7/1/2008
Vice-Chancellor - Business and Financial Affairs	\$162,339	Previous salary on 08/01/2008 was \$197,773. New VC hired at a salary of \$162,339
Associate VC - International Programs & Director C.C.L.S.	\$194,909	Change from \$188,318 based on General Merit Raise on 7/1/2008
Associate VC - Library and Information Technology	\$135,000	Interim Director hired on 6/1/2008 at salary of \$130,000. Director hired 2/1/2009 at a salary of \$135,000. Position became vacant. New Director hired to begin 6/2011 at a salary of \$135,000
Director of Admissions	\$115,000	Previous salary was \$125,000. Position became Vacant. Interim Director paid \$78,985 + \$1,500 per month in position. New Director hired 1/2011 at salary of \$115,000
Director of Communication and External Relations	\$88,350	Change from \$84,143 based on General Merit Raise on 7/1/2008
Director of Human Resource Management	\$78,801	Change from \$75,772 based on General Merit Raise on 7/1/2008
Director of Clinical Legal Education & Professor of Professional Practice	\$135,000	New Position. Director hired on 07/07/2008 at salary of \$135,000
Director of Legal Writing Assoc. Prof. of Professional Practice	\$81,260	Change from \$78,136 based on General Merit Raise on 7/1/2008
Director of Career Services		Position is currently vacant. Previous Director salary was \$70,810
Registrar & Director of Student Affairs	\$82,706	Change from \$79,525 based on General Merit Raise on 7/1/2008
Comptroller & CFO	\$115,000	Previous salary was \$111,448. New Comptroller/CFO hired on 10/27/2008 at salary of \$115,000
Director of Center of Continuing Professional Development	\$79,032	Change from \$75,993 based on General Merit Raise on 7/1/2008