

# **Organizational Data**

**Submitted to  
The Louisiana Board of Regents  
In Partial fulfillment of the requirements of Act 741  
Louisiana GRAD Act**

**Nunez Community College  
Louisiana Community and Technical College System**

**Spring 2011**

**a. Number of students by classification 2010-11**

- **Headcount, undergraduate students and graduate/professional school students**

Undergraduate headcount	2,415
-------------------------	-------

- **Annual FTE (full-time equivalent) undergraduate and graduate/professional school students 2010-11**

Undergraduate FTE	1,286.7
-------------------	---------

**b. Number of instructional staff members 2010-11**

- **Number and FTE instructional faculty**

Total Headcount Faculty	81
FTE Faculty	57.3

- c. **Average class student-to-instructor ratio 2010-11**
- **Average undergraduate class size at the institution**

Average undergraduate class size	18.5
----------------------------------	------

**d. Average number of students per instructor 2010-11**

- **Ratio of FTE students to FTE instructional faculty**

Average number of students per instructor	22.5
---	------

- e. **Number of non-instructional staff members in academic colleges and departments**
- **Number and FTE non-instructional staff members by academic college (or school, if that is the highest level of academic organization for some units) 2010-11**

Number of non-instructional staff	FTE non-instructional staff
30	29.25

- f. **Number and FTE of staff in administrative areas 2010-11**
- **Number and FTE of staff as reported in areas other than the academic colleges/schools, reported by division**

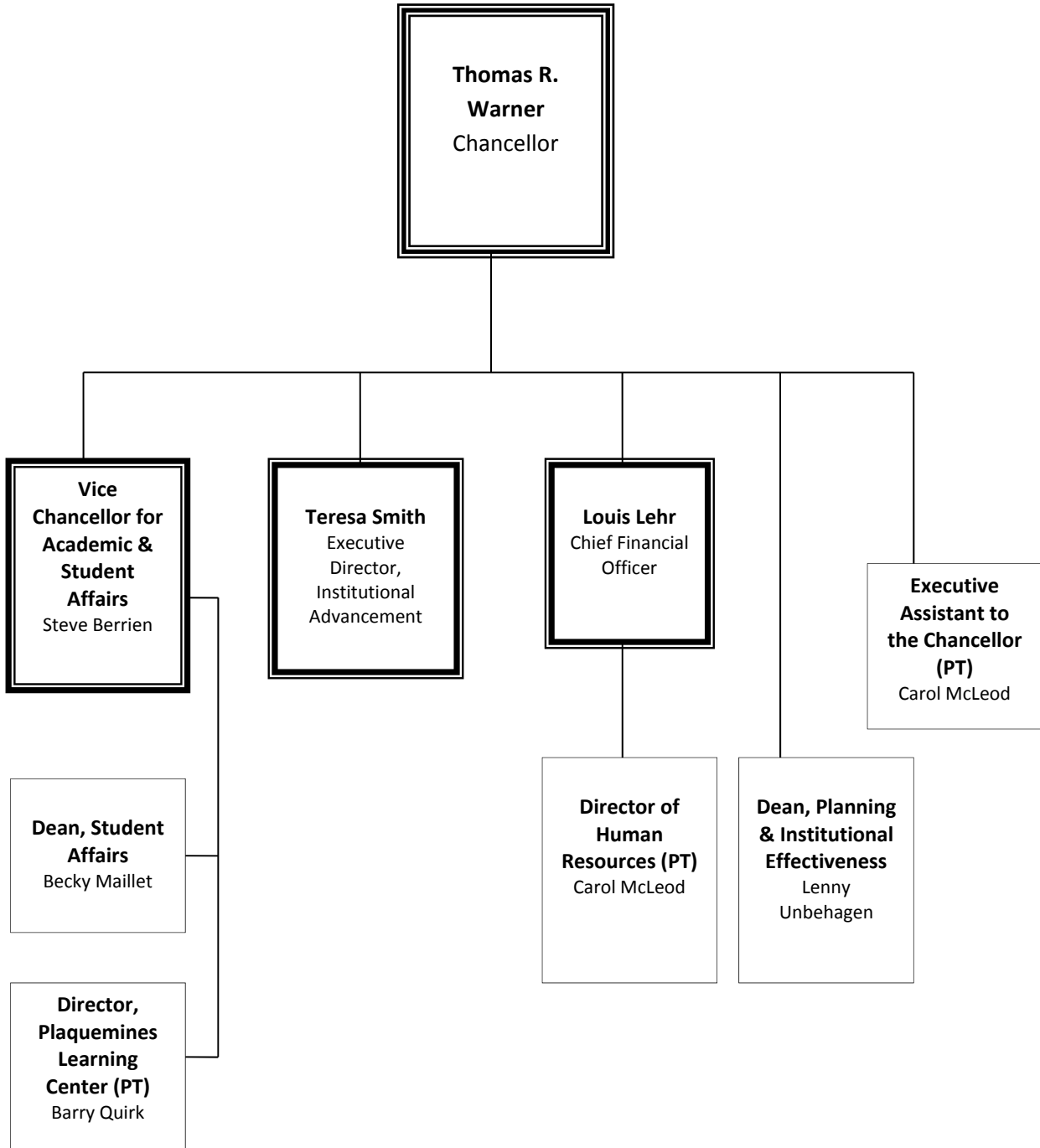
Number of staff	FTE staff
7	5

This number has been changed to reflect 2010. The previous numbers entered were for 2009.

- g. **Organization chart containing all departments and personnel in the institution down to the second level of the organization below the president, chancellor, or equivalent position (as of Fall 2010)**

# Nunez Community College Organization Chart

2010-2011





**h. Salaries of all personnel identified in subparagraph (g) above and the date, amount, and type of all increases in salary received since June 30, 2008**

- **A chart listing the title, fall 2009 Total Base Salary, and a history of any salary changes (within the same position) since June 30, 2008.**

<b>Position</b>	<b>FA09 Salary Database</b>	<b>Salary changes from June 30, 2008 to present.</b>
Vice Chancellor for Academic Affairs	90,000	Merit increase 7/1/2008 from 91,000 to 93,000.
		Dr. Berrien hired 3/2/2009 at 90,000. Hired to replace vacancy left by Curtis Manning's return to 9 mth faculty.
		Reorganization of Student & Academic Affairs consolidated two departments eliminated VC of SA and created (VCASA). Increase due to reorganization of Student and Academic Affairs 11/16/2009 to 100,000
Vice Chancellor for Student Affairs	92,000	Merit increase 7/1/2008 from 90,000 to 92,000.
		Donna Clark retired 11/16/09.
Director of Admissions	72,000	Created 11/16/2009 with reorganization of Student and Academic Affairs; Director of Admissions promoted to (Dean of Student Affairs). Promotion salary increase from 62,000 to 72,000 11/16/2009
		Additional duties increase from 72,000 to 75,000 on 8/16/2010.
Dean of H&NS/ Professor	72,000	Merit increase 7/1/2008 from 67,000 to 72,000
		8/16/2010 removed as Dean put back into 9mth faculty, salary decrease to 64,900.
Dean of IR/IE	67,000	Merit increase 7/1/2008 from 65,000 to 67,000.

CFO	86,000	Merit increase 7/1/2008 from 84,000 to 86,000.
		Sylvest resigned 6/13/10.
		Interim replacement hired 5/10/10 at 83,000.
		Regular replacement hired 8/23/2010 at 75,000.
Ex Dir IA/Assistant to Chancellor	87,000	Merit increase 7/1/2008 from 84,240 to 87,000.
		Title changed to Ex Dir IA/Special Assistant to the Chancellor; no salary change.
Chancellor	142,990	Merit increase 7/1/2008 from 134,896 to 136,896.
		Increase 9/8/2008 to 142,990.
Director of PLC	30,200	Merit increase 7/1/2008 from 29,200 to 30,200.
		8/16/10 hours reduced to 12 hours per week; hourly salary remains at 29.04 hr.
Director of HR	69,000	Corrective pay 7/1/2008 from 68,000 to 69,000.
		8/16/10, Added Executive Assistant to the Chancellor duties, salary increased to 73,000.
Dean of B&T/Assistant Professor	71,000	Promotion and merit pay 7/1/2008 from 60,000 to 71,000.
		Title change to Program Director; no salary change.
Dean of A&H/Associate Professor	69,000	Merit increase 7/1/2008 from 68,000 to 69,000.
		8/16/2010 removed as Dean, put back into 9mth faculty, salary decrease to 59,465.