

# **Organizational Data**

**Submitted to  
The Louisiana Board of Regents  
In Partial fulfillment of the requirements of Act 741  
Louisiana GRAD Act**

**SOWELA Community College  
Louisiana Community and Technical College System**

**April 1, 2011**

**a. Number of students by classification**

- **Headcount, undergraduate students and graduate/professional school students**

Undergraduate headcount	2,133
-------------------------	-------

- **Annual FTE (full-time equivalent) undergraduate and graduate/professional school students**

Undergraduate FTE	1,837.4
-------------------	---------

**b. Number of instructional staff members**

- **Number and FTE instructional faculty**

Total Headcount Faculty	120
FTE Faculty	80.7

- c. **Average class student-to-instructor ratio**
- **Average undergraduate class size at the institution**

Average undergraduate class size	18.8
----------------------------------	------

**d. Average number of students per instructor**

- **Ratio of FTE students to FTE instructional faculty**

Average number of students per instructor	23
---	----

- e. **Number of non-instructional staff members in academic colleges and departments**
- **Number and FTE non-instructional staff members by academic college (or school, if that is the highest level of academic organization for some units)**

Number of non-instructional staff	FTE non-instructional staff
20	20

Note: The numbers indicate EEO Category equal "3".

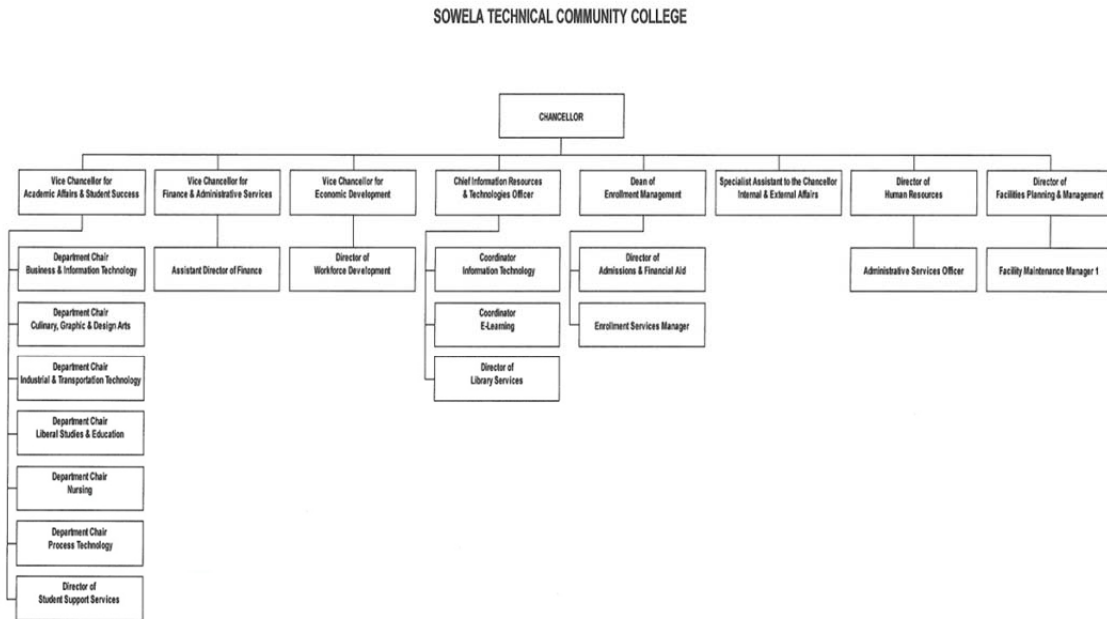
**f. Number and FTE of staff in administrative areas**

- **Number and FTE of staff as reported in areas other than the academic colleges/schools, reported by division**

Number of staff	FTE staff
9	9

Note: The numbers indicate EEO Category equal "1".

- g. Organization chart containing all departments and personnel in the institution down to the second level of the organization below the president, chancellor, or equivalent position (as of Fall 2009)





**h. Salaries of all personnel identified in subparagraph (g) above and the date, amount, and type of all increases in salary received since June 30, 2008**

- **A chart listing the title, fall 2009 Total Base Salary, and a history of any salary changes (within the same position) since June 30, 2008.**

<b>Position Title</b>	<b>Fall 2009 Base Salary</b>	<b>History of salary change since 6/30/2008</b>
Dr. Andrea Lewis Miller Chancellor	\$139,390	No Change
Dr. Douglas R. Bateman, II Vice Chancellor for Academic Affairs & Student Success	\$95,000	No Change
Angele Ozoemelum Vice Chancellor for Finance & Admin Services	\$90,395	No Change
Richard B. Smith Vice Chancellor for Economic Development	\$81,513	No Change
Dr. Charles Nwankwo Chief Info Resources & Technologies Officer	\$90,000	No Change
Nancy H. Joslin Dean of Enrollment Management	\$70,990	No Change
Dr. Teresa Jones Special Assistant to the Chancellor, Internal & External Affairs	\$75,000	No Change
Nicole Moncrief Director of Human Resources	\$57,247	No Change
Davidson Darbone Director of Facilities Planning & Management	\$75,000	No Change
Mathilda Rigmaiden Dept. Chair: Business & Information Technology	\$67,189	No Change
Gray Little Dept. Chair: Culinary, Graphic & Design Arts	\$62,809	No Change
Melvin Cox Dept. Chair: Industrial & Transportation Technology	\$66,411	No Change
Charles Stewart Dept Chair: Liberal Studies & Education	\$54,200	No Change
Regina Johnson Dept. Chair: Nursing	\$87,600	No Change
Linton LeCompte Dept. Chair: Process Technology	\$56,768	No Change
Christine Collins Director of Student Support Services	\$41,000	No Change
Tamalla Green Assistant Director of Finance	\$43,160	No Change

William Mayo Director of Workforce Development	\$52,000	No Change
Dr. M. Jo Schexneider IT Coordinator	\$59,945	No Change
Desiree Devereaux eLearning Coordinator	\$60,586	No Change
Mary Frances Sherwood Director of Library Services	\$45,207	No Change
Anna Daigle Director of Admissions & Financial Aid	\$59,160	No Change
Laura LaFleur Enrollment Services Manager	\$34,170	No Change
Brenda P. Manuel Administrative Services Officer	\$48,270	No Change
Anthony Peshoff Facility Maintenance Manager 1	\$40,498	No Change