

Organizational Data

**Submitted to
the Board of Supervisors of the
University of Louisiana System and
the Louisiana Board of Regents**

**In partial fulfillment of the requirements of Act 741
Louisiana GRAD Act**

**University of Louisiana at Lafayette
University of Louisiana System**

March 15, 2011

a. Number of students by classification

- **Headcount, undergraduate students and graduate/professional school students**

Source: Enrollment data submitted by the institutions to the Statewide Student Profile System (SSPS), Board of Regents summary report SSPSLoad, Fall 2010

Undergraduate headcount	15,306
Graduate headcount	1,457
Total headcount	16,763

- **Annual FTE (full-time equivalent) undergraduate and graduate/professional school students**

Source: 2010-2011 Budget Request data submitted to Board of Regents as per SCHBRCRPT.

Undergraduate FTE	13,525.90
Graduate FTE	1,044.50
Total FTE	14,570.40

b. Number of instructional staff members

- **Number and FTE instructional faculty**

Source: Employee data submitted by the institutions to the Employee Salary (EMPSAL) Data System, file submitted to Board of Regents in fall 2010. Instructional faculty is determined by Primary Function = "IN" (Instruction) and EEO category = "2" (Faculty). FTE is determined utilizing the Campus Percent Effort (CPE) field.

Total Headcount Faculty	733
FTE Faculty	650.1

c. Average class student-to-instructor ratio

- **Average undergraduate class size at the institution**

Source: Credit hour data submitted to the Student Credit Hour (SCH) Reporting System and SPSS, Board of Regents, Fall 2010.

Includes Fall 2010 data submitted to BoR staff on 2/15/11 but not verified. There were 377 students enrolled in 16 sections that started after the Fall 14th class day and were reported in the Spring SCH file as term = 2.

Undergraduate headcount enrollment	72164
Total number of sections in which the course number is less than or equal to a senior undergraduate level	2599
Average undergraduate class size	27.8

d. Average number of students per instructor

- **Ratio of FTE students to FTE instructional faculty**

Source: Budget Request information 2010-2011as per SCHBRCRPT and Employee Salary (EMPSAL) Data System, Board of Regents, Fall 2010.

Total FTE enrollment	14,570.40
FTE instructional faculty	650.1
Ratio of FTE students to FTE faculty	22.41

e. Number of non-instructional staff members in academic colleges and departments

- **Number and FTE non-instructional staff members by academic college (or school, if that is the highest level of academic organization for some units)**

Source: Employee data submitted to the Employee Salary (EMPSAL) Data System, submitted to Board of Regents in fall 2010, EEO category = "1" (Executive, Administrative, Managerial) or "3" (Other professionals, support/service) and a Primary Function not equal to "IN" (Instruction). This item reports staff members that are an integral part of an academic college or equivalent unit.

Name of College/School	Number of non-instructional staff	FTE non-instructional staff
COLLEGE OF BUSINESS ADMINISTRATION	2	2
COLLEGE OF EDUCATION	4	4
COLLEGE OF ENGINEERING	1	1
COLLEGE OF LIBERAL ARTS	4	4
COLLEGE OF THE ARTS	6	6
COLLEGE OF SCIENCES	7	7
COLLEGE OF NURSING	2	2
COLLEGE OF GENERAL STUDIES	3	3
GRADUATE SCHOOL	2	2

f. Number and FTE of staff in administrative areas

- **Number and FTE of staff as reported in areas other than the academic colleges/schools, reported by division**

Source: Employee data submitted to the Employee Salary (EMPSAL) Data System, submitted to Board of Regents in fall 2010, EEO category = "1" (Executive, Administrative, Managerial) or "3" (Other professionals, support/service) and a Primary Function not equal to "IN" (Instruction). This item reports staff members that are not an integral part of an academic college or equivalent unit, e.g. enrollment management, sponsored research, technology support, academic advising, and library services.

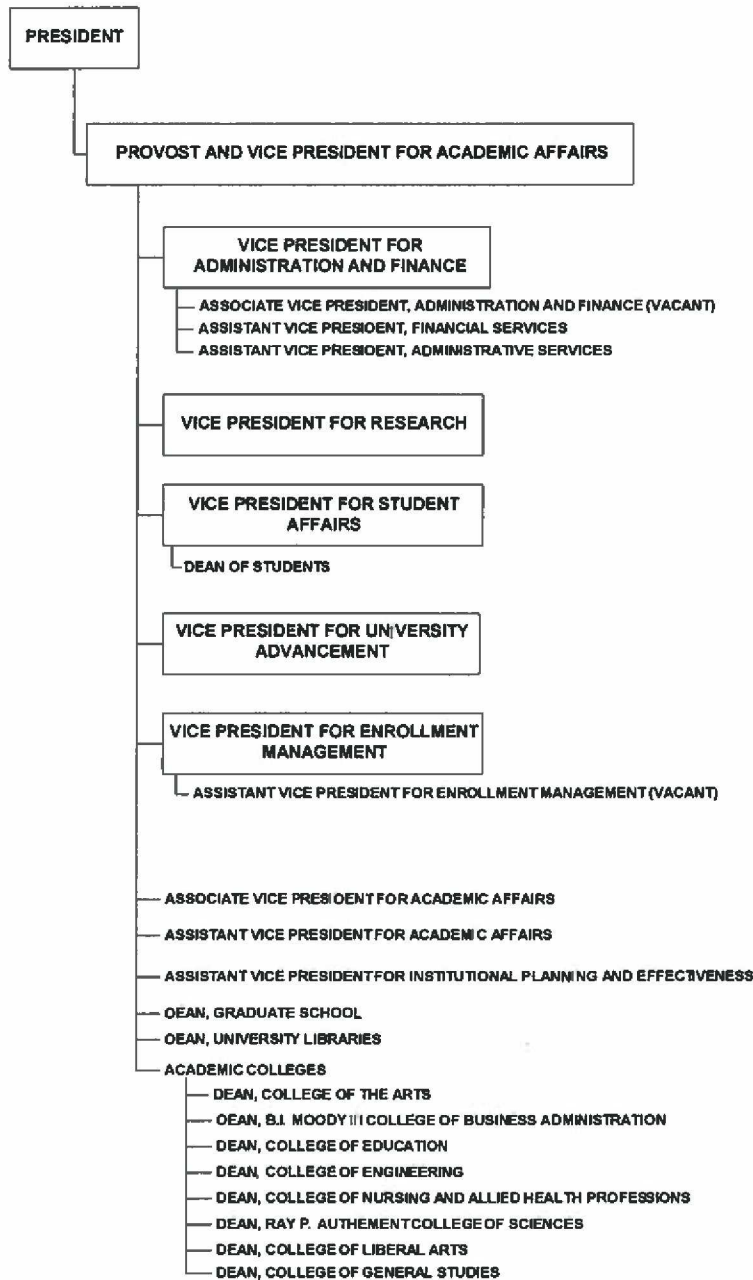
Name of Division	Number of staff	FTE staff
PRESIDENT'S OFFICE	5	5

ADMINISTRATION & FINANCE	87	87
ACADEMIC AFFAIRS	53	53
STUDENT AFFAIRS	43	43
RESEARCH	156	156
UNIVERSITY ADVANCEMENT	19	19
ENROLLMENT MANAGEMENT	20	20
ATHLETICS	52	52

- g. Organization chart containing all departments and personnel in the institution down to the second level of the organization below the president, chancellor, or equivalent position (as of Fall 2010).



University of Louisiana at Lafayette Organization Chart



h. Salaries of all personnel identified in subparagraph (g) above and the date, amount, and type of all increases in salary received since June 30, 2008

- **A chart listing the title, fall 2010 Total Base Salary, and a history of any salary changes (within the same position) since June 30, 2008.**

Position	Total Base Salary, Fall 2010	Salary Changes Since 6/30/2008
President	\$350,000	\$380,000 9/1/08 Housing allowance removed from salary
Provost/VP Academic Affairs	\$225,000	Maintained Provost duties until retirement 2/21/11; Interim VP for Academic Affairs named on 7/1/10
VP Administration & Finance	\$215,000	\$211,602 4/30/09 Promoted from Interim VP for Administration and Finance to VPAF
VP Research	\$224,000	8/15/10 New Hire
VP Student Affairs	\$114,000	
VP University Advancement	\$156,000	
VP Enrollment Management	\$150,000	\$110,000 7/1/09 Promotion from Interim VP Enrollment Mgmt to VPEM
Interim Vice President for Academic Affairs (Associate VP for Academic Affairs)	\$198,900	\$117,767 10/10/08 Promotion from Asst. VP Academic Affairs to Assoc. VPAA with additional duties \$140,000 7/1/10 Promotion to Interim Vice President for Academic

		Affairs
Assistant VP for Academic Affairs	\$128,002	\$134,000 \$126,000 is base salary Fluctuations since 6/30/08 are increases/`decreases in professorships that expire 6/30/11
Assistant VP for Institutional Planning and Effectiveness	\$131,556 (9 mo)	\$134,556 6/30/10 – Two professorships expired reducing salary by \$3,000
Assistant VP Financial Services	\$126,920	
Assistant VP Administrative Services	\$123,982	
Dean of Students	\$79,413	\$75,631 12/5/08 Promoted to Interim Dean of Students
Dean, Graduate School	\$136,299	
Dean, University Libraries	\$119,244	
Dean, College of the Arts	\$151,376	
Dean, Business Administration	\$205,168	
Dean, Education	\$146,798	
Dean, Engineering	\$195,969	
Dean, Nursing & Allied Health Professions	\$161,276	
Dean, Sciences	\$169,164	
Dean, Liberal Arts	\$138,363	
Dean, General Studies	\$118,754	